

POINT CLARE PUBLIC SCHOOL NEWSLETTER



TERM 4 | WEEK 3 | 28 OCT 2024

SUCCESSFUL STUDENTS

One of the great joys of my week – every week – is when our students come to show me some of their latest and greatest work. This past week I had the pleasure of talking to several of our Kindergarten stars about their writing. What our Kindergarten children are capably producing at the moment is a testament to the quality teaching that takes place every day in our school. Well done kids and huge thanks to our dedicated ES1 teachers for all that they do.

Nurturing Inspiring Achieving

IMPORTANT DATES

Tues	29/10	Jump Start - Session 2 (Kinder 2025)
		Swim Scheme Yr 2
Wed	30/10	Swim Scheme Yr 2
Thurs	31/10	Swim Scheme Yr 2
Fri	1/11	Swim Scheme Yr 2
Mon	4/11	Swim Scheme Yr 2
Tues	5/11	Swim Scheme Yr 2
		Jump Start - Session 3 (Kinder 2025)
Wed	6/11	Swim Scheme Yr 2
Thurs	7/11	Swim Scheme Yr 2
Fri	8/11	Swim Scheme Yr 2 - last day
		Year 6 Funday

LAST DAY TERM 4 -
WEDNESDAY 18 DECEMBER



Our congratulations go out to both Nate R and Grace K of Stage 3 for their efforts while representing the Sydney North PSSA at the NSWPSA Athletics championships held in Sydney last week. Nate competed in the 100m and finished 17th overall on times and 11th overall in the 200m. Grace competed in the 11 years girl's discus & shotput. She finished 4th in shotput and 2nd overall in discus thereby gaining selection in the NSWPSA Athletics team for the second year in a row. Well done to both students and sincere congratulations Grace on your unique achievement.

Thought of the Week



POINT CLARE PUBLIC SCHOOL

SUCCESSFUL STUDENTS CONT.

To seal the deal on a week of achievements I would like to congratulate our whole staff for the teamwork behind the scenes that drove the absolutely fabulous musical 'Are We There Yet?'. I'm sure every parent, carer, relative or family friend who attended either a matinee or evening performance thoroughly enjoyed the show. Everyone on our staff contributed to making the event extra special thanks to the inclusive and inspirational leadership of Mrs Cuthbertson. I also would like to acknowledge the outstanding efforts made by the students in every class who gave the performance everything they had. A huge shout-out to the talented cast who gave up multiple lunchtimes to rehearse the script. In closing I'd like to also acknowledge our very hard-working P&C for supporting all of the shows by selling drinks and snacks to the audience. As always, your ongoing support of the school is greatly appreciated.



POINT CLARE PUBLIC SCHOOL

WORLD TEACHERS DAY

This week we will be celebrating World Teachers Day at Point Clare PS. While the official day was last Friday, not all of our staff work on a Friday so I will be making a special effort this week to acknowledge my staff in small ways each day. Point Clare is the fifth school I have worked in during my teaching career. I can say with no hesitation that this is without doubt the best school I have ever worked in and that is a direct result of the efforts made by the outstanding team of teachers that we have in this school. I am immensely proud of what we do here everyday and couldn't wish for a better school.




BUSHFIRE PREPARATION

As previously advised, our school is in the Greater Sydney Region which is a bushfire prone area and is identified as Category 2 on the NSW Department of Education's bushfire risk register. This means our school will be non-operational when the NSW Rural Fire Service declares catastrophic fire danger ratings for the Greater Sydney Region or as directed by the NSW Department of Education in consultation with emergency services due to local bushfire activity or in higher risk conditions.

We recommend you download the [NSW Education Parent App](#) and select to monitor advice from our school, which will send you notifications if the school is non-operational. Up-to-date information is also available on our school website or [School operational status](#).


We also recommend you stay up to date with bushfire and grassfire activity by using the [Hazards Near Me app](#) (set a watch zone for our school area) and by monitoring local media.


Download the Hazards Near Me NSW app



Hazards Near Me NSW

Hazards Near Me shows current information about local emergencies, including flood, bushfire and tsunamis, and advice on what to do to stay safe. The app can send you push notifications when there are new incidents or when information changes.

[iOS](#) 

[Android](#) 

POINT CLARE PUBLIC SCHOOL

SCHOOL TRAVEL / BUS PASSES 2025

Applications are now open for 2025 School Student Transport Scheme (SSTS) travel. Students in the Opal network applying for an Opal card (including a Term Bus Pass) for the first time will receive their School Opal card at their nominated postal address from mid-January 2025.

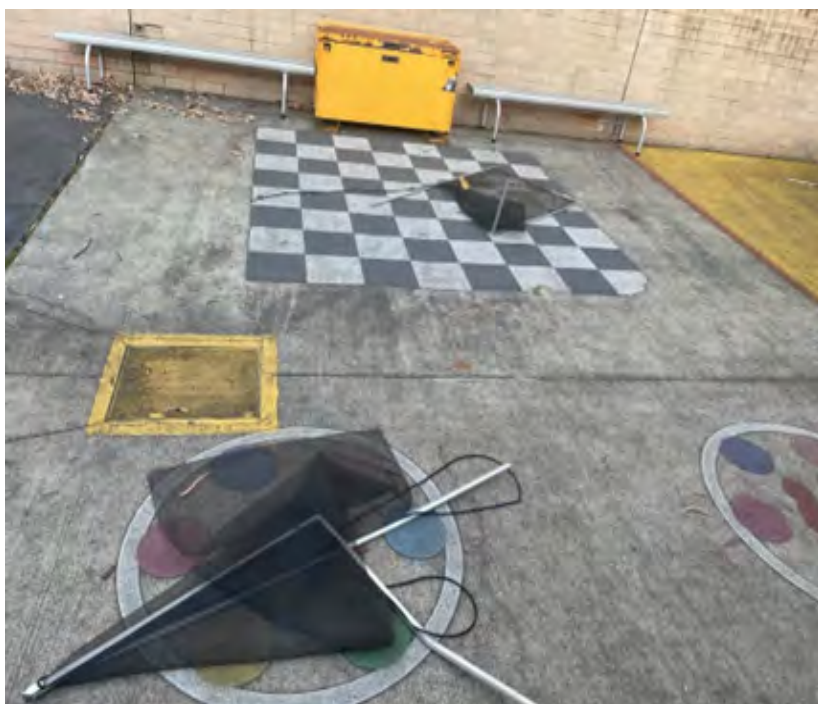
Students who require a School Opal card or travel pass but have not yet applied need to [apply](#) or [update](#) their details as soon as possible. In the Opal network, students should travel with a Child/Youth Opal card until they receive their valid School Opal card. If outside Greater Sydney, parents should contact their [local bus operator](#) to discuss their travel needs.

VANDALISM

Unfortunately, over the weekend the school has once again been the victim of some random acts of vandalism. It is impossible to understand why anyone would feel the need to destroy school property. Absolutely senseless stupidity. As you can see from the pictures below we now have one classroom with no flyscreens and yet another sliding door with broken glass. This means that we will once again have disrupted classrooms whilst the repairs are being made. Anyone who sees people inside the school grounds over the weekends acting suspiciously or behaving recklessly should contact the school security unit on either:

Phone: 1300 88 00 21

Email: SSUCustomerservice@det.nsw.edu.au



POINT CLARE PUBLIC SCHOOL

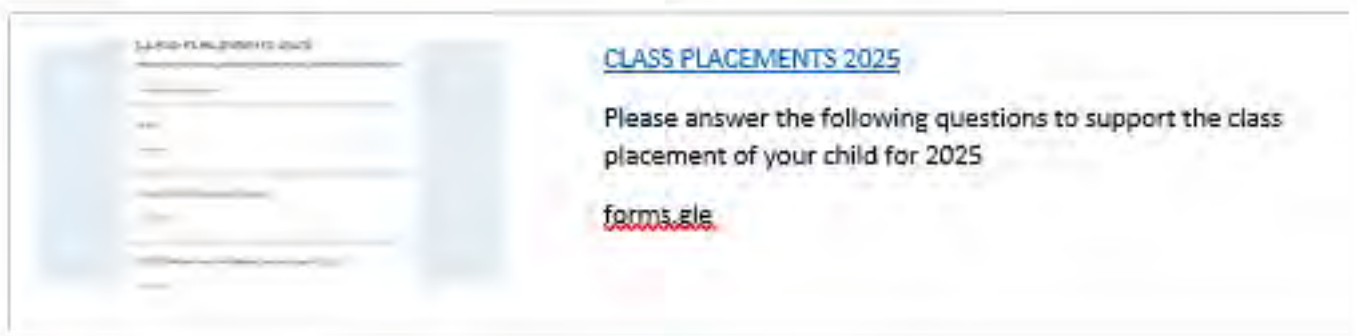
CLASS REQUESTS 2025

Over the past seven (7) years we have worked extremely hard to collaborate with our community to accurately form our classes for each Stage of learning.

A great deal of thinking is involved in forming classes with teacher and parental input, academic achievement, behavioural considerations, reasonable adjustments for learning difficulties, health conditions, teaching styles and available physical spaces all being taken into consideration before any student is placed in any class. The whole process takes up two full weeks this term and is usually not resolved until the second week back in Term 1 next year.

This year we are asking that all families refine the focus of their class requests to considerations around your child or children's specific educational needs, health care supports and preferences for potential learning spaces. Additionally, all requests for individual class teachers for 2025 will not be considered due to retirements and several members of the teaching staff changing to different Stages of learning. All requests must be submitted via the google form link provided below for consideration. The following google link will remain open until 4pm on Friday 22 November at which point it will be locked so that the teachers can begin the process of assigning classes.

<https://forms.gle/BQSPkCam1V8rKfmh6>



Mr Scott Campbell
Principal

PBL - POSITIVE BEHAVIOUR FOR LEARNING



The focus for PBL for Week 3 is Playground areas and sun safety. Focus for Week 4 is Walkways and moving around the school.

POINT CLARE PUBLIC SCHOOL

LIBRARY NEWS



Holiday Returns

Just a reminder that everything borrowed throughout Term 3 and during the September holidays is now due to be returned. If your child is still reading the book, they are welcome to renew their loan, however they will need to bring the book into the library to scan again.

Your assistance with this is appreciated. Please contact me if you have concerns about missing or damaged books.

Scholastic Book Club - Due 29 October

The Book Club Magazine Issue 7 was distributed last week. Students. If you wish to order for Christmas and don't want your child to know, please don't forget to check the 'Gift' box and Mrs McCabe will phone you when the order is delivered to the school, rather than giving the order to your child's classroom. All orders are due tomorrow, Tuesday 29 October. Please click the link to visit the Book Club Parent Portal to view the magazine online and place your order through the book club LOOP <https://www.scholastic.com.au/book-club/book-club-parents/book-club/>



Happy Reading,

Jodie McCabe
Teacher/ Librarian

Calling all
GRAND PARENTS!

Join us in celebrating our wonderful grandparents on Fri 15 Nov from 2-3pm. Come visit the classrooms and enjoy an afternoon tea with us! We look forward to sharing this special day with you.

POINT CLARE PS

Presents...



Based on the book by Alison Lester. Turned into a musical, it is about a family who are going on an adventurous trip around Australia with Mum, Dad, Grandma and three kids.

With the family dynamics, is it guaranteed that they will find themselves in hilarious situations.

STARRING . . .



Juliette P
Kid



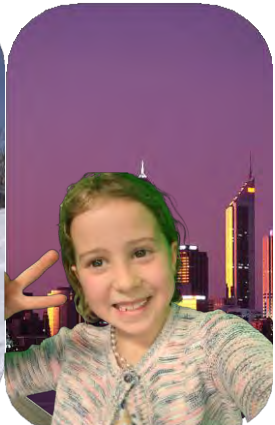
Ebony P
Tourist



Sophie F
Isla



Lola B
Grandma



Holly G
Rosemary



Edith M
Dad



Isabel M
Mum



Violet M
Bridget



Maddy W
Stacey



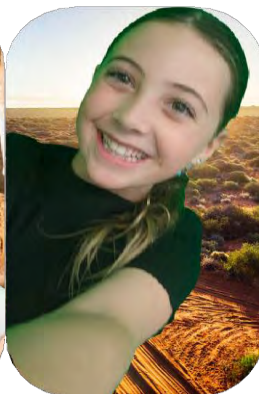
Charlie B
Tourist



Susie C
*Officer
Collins*



Amelia L
*Officer
Ruby*



Kiara G
GPS



Haylee S
Rosie



Melody O
Flanders

ORDER OF EVENTS . . .



Acknowledgment of country

Sydney - Stage 2 Green

Bathurst - Stage 3 Dance Group

Tamworth - Stage 1 Orange

Gold Coast - Stage 3 Drama

Hervey Bay - ES1 Red

Townsville Great Barrier Reef - Stage 1 Blue

Bamaga - Stage 2 Purple, Red & Yellow

Torres Strait Islands - ES1 Blue

Kakadu - Stage 1 Green

Darwin - 3-6 Choir

Uluru - Stage 1 Red

Wadeye - Stage 2 Purple, Red & Yellow

Broome - Stage 2 Purple, Red & Yellow

Rottnest Island - K-2 Choir

Wave Rock - Stage 1 Yellow

Great Australian Bight - ES1 Green

Mount Hotham - Stage 3 Dance Group

Melbourne - Stage 3 Rap

Phillip Island - Stage 1 Purple

Port Arthur - Stage 2 Blue

Bondi Beach - Stage 3 Choir

FINALE





SPECIAL THANKS TO . .

- Point Clare Public School P&C
- All people and companies that donated to the school
- All students who entered the colouring in competition
- Point Clare Public School Office & Support Staff
- Every teacher and their students who put on such an amazing performance!

**CHRISTMAS RAFFLE
STARTING SOON!**

**UPCOMING
EVENTS**

**SAT
2 NOV
9AM - 12**



BANDFEST - TRAINING & CONCERT BANDS

- Narara Valley Baptist Church, Narara Valley Drive
- Please arrive promptly for sign-in & warm-up
- Band Shirts - provided at venue
- Students to wear black pants with black socks & shoes
- Remember to bring instruments & music folder



**WED
6 NOV**

LAST DAY TO ORDER COLOURED SHIRTS FROM UNIFORM SHOP FOR FUNDRAISER!

- \$15/shirt [NO EXCHANGES OR REFUNDS]
- Order via Munch Monitor (www.munchmonitor.com)



**WED
11 NOV
7:30PM**

**P&C General Meeting - MEMBERS & NON-MEMBERS
MICROSOFT TEAMS MEETING - <https://tinyurl.com/pcpspandc>**
Your chance to join the discussion and get involved!



**TUES
12 NOV**

KINDY '25 SPECIAL RECESS FROM CANTEEN

- Pre-order by 8:15am on the day - menu attached



**FRI
22 NOV
3PM**

CHRISTMAS RAFFLE - ALL TICKETS DUE (SOLD/UNSOLD)
Drop off at school office. >> Top sellers decided <<



MON 25 NOV - MINGLE & JINGLE EVENT (whole school)

- Raffle drawn at event
- Silent auction
- Performances from students, incl. both bands!

**VOLUNTEERS
NEEDED**

**~ MINGLE & JINGLE ~
PLEASE COME HELP!**

Bringing an event like this to life requires a lot of collaboration, and we truly appreciate your help! We have received numerous offers of donations for stalls, but we need volunteers to manage and operate them.

If you are interested in helping out or running any of the following stalls, please let us know by next MONDAY 4th NOVEMBER!

- Plants and cuttings stall (min. 2 people needed)
- Face painting stall (min. 4 adults needed)
- Colored hair braiding stall (min. 4 adults needed)

If we do not have enough volunteers to run these stalls, the event will be scaled back to only include the student performances, Christmas Raffle draw, Silent Auction, Lolly Guessing competition and the Canteen's counter service.

Let us know how you can help via email:
SECRETARY@POINTCLAREPANDC.COM

OR through our Facebook page:
'P&C FOR POINT CLARE'

We look forward to hearing from you soon!



2024 BAND FEST

The Central Coast Band Festival 2024 will feature around 30 bands from 18 schools at Narara Valley Baptist Church. This annual showcase allows students to represent their schools in a friendly competition with three concerts throughout the day.

The Point Clare Training and Concert bands will perform from 10:15 am to 12 pm, with students arriving by 9:30 am (at the latest) to sign-in, receive band shirts and warm-up.

Special performances will include the Primary Wind Ensemble and Symphonic Wind Orchestra.

Bands will receive gold, silver, or bronze ratings and feedback from an external adjudicator.

Entry is \$15 or \$30 for families.
Performers do not need a ticket.
Tickets can be purchased via the link below:



<https://events.humanitix.com/central-coast-band-festival-2024>

GOOD LUCK PCPS BAND STUDENTS!

KINDY'25

Special Recess

Tuesday 12th November 2024

We welcome all our new Kindy 2025 students and their families to try ordering from our Canteen on Tuesday the 12th of November. All orders will need to be made online via Munch Monitor and can be made in advance. If you haven't registered for an account yet, the details are provided below.



Order cut-off is 8:15am on the day.

Register with Munch Monitor to order online www.munchmonitor.com

Details for Account Login:



USERNAME: pointclare
PASSWORD: munch2250



PLEASE SET-UP
YOUR CHILD'S CLASS
AS 'K2025'



Recess Items

Order online or over counter until sold out

20c Pikelets (CM, Dairy Free)

50c Popcorn (CM)

\$1.50 Pieces of Fruit (seasonal)

\$1.50 Raisin Toast - 1 slice

\$2.00 Toasties (CM) - 1 slice

- Ham & Cheese
- Ham, Cheese & Pineapple
- Spinach & Cheese

\$3.00 Ham & Cheese Roll

\$3.00 Fruit Cup (seasonal)

\$3.00 Vege Stick Cup

\$2.00 Yoghurt Cup

\$2.00 Custard Cup

\$2.50 Yoghurt with Berry & Muesli

\$2.00 Real Fruit Jelly Cup (CM)

- Add Custard for 50c



SANDWICHES

Available Online Everyday

\$3.00 Vegemite

\$3.50 Cheese Sandwich

\$4.00 Ham & Cheese Sandwich

\$4.50 Ham, Cheese & Tomato Sandwich

DRINKS

AVAILABLE ALL DAY

\$2.00 Water - 600ml

\$2.00 Light Milk - 300ml



\$3.00 Glee - 250ml

- Raspberry
- Blackcurrant
- Tropical
- Grape

\$3.00 Fruit Juice

- Apple
- Orange

\$3.00 Nippy's Flavoured Milk - 250ml

- Chocolate
- Strawberry

\$3.50 Flavoured Milk - 300ml

- Chocolate
- Strawberry

\$3.50 Hot Chocolate

FROZEN ITEMS

AVAILABLE ALL DAY

\$1.50 Juicies Sachet

See Munch Monitor for flavours.

\$1.50 Icy Cup

- Apple
- Orange
- Strawberry
- Apple Blackcurrant
- Chocolate

\$2.00 Juicies Tube

- Wildberry
- Tropical
- Lemonade
- Orange

CM = Canteen Made

GF = Gluten Free



The P&C Canteen subcommittee's menu choices adhere to the NSW Healthy School Canteen Strategy.

More info: <http://healthyschoolcanteens.nsw.gov.au>

ONLINE ORDERS ONLY - 8:15AM CUT-OFF

Please email or call us by 9:30am to change or cancel your order if your child is away from school.

EMAIL: canteen@pointclarepandc.com

PHONE via school office: (02) 4325 0594

CURRENT TIMES AVAILABLE FOR PEOPLE TO VOLUNTEER IN THE CANTEEN

We need at least 1 volunteer in the morning and 1 volunteer in the afternoon to open counter service!

Week 3	MON 28/10	TUES 29/10	WED 30/10	THUR 31/10	FRI 1/11
9am to 11:30am	FILLED			FILLED	FILLED
12-midday to 2pm	FILLED				FILLED
Week 4	MON 4/11	TUES 5/11	WED 6/11	THUR 7/11	FRI 8/11
9am to 11:30am				FILLED	FILLED
12-midday to 2pm					FILLED
Week 5	MON 11/11	TUES 12/11	WED 13/11	THUR 14/11	FRI 15/11
9am to 11:30am					FILLED
12-midday to 2pm					FILLED
Week 6	MON 18/11	TUES 19/11	WED 20/11	THUR 21/11	FRI 22/11
9am to 11:30am					
12-midday to 2pm					

WE ALWAYS NEED HELP.

>> *Even 30 minutes makes a difference!* <<

UNIFORM SHOP'S COLOURED SPORTS SHIRT FUNDRAISER

- Shirts cost \$15 each and comply with DET's uniform policy.
- Plain shirts - no embroidery.
- Guaranteed colour matching with 2-sided school hats as these shirts are from the same supplier.
- **ORDERS DUE VIA MUNCH MONITOR BY WEDNESDAY NOVEMBER 6, 2024.**
- Estimated delivery by the end of November.
- As this is a fundraiser with a one-off order, there will be **NO REFUNDS OR EXCHANGES.**

**Limited Time
Sports Shirt
Fundraiser**

**\$15
each**

**AVAILABLE NOW VIA MUNCH MONITOR
UNTIL WEDNESDAY 6TH NOV '24**



Point Clare Public School
UNIFORM SHOP

**ORDERS DELIVERED
END OF NOVEMBER**



Point Clare
Public School



UNIFORM SHOP



SHOP OPEN THURSDAYS
8:30 - 9:30AM

ONLINE PURCHASES
OPEN EVERYDAY

- In-store purchases can be made with cash or card (1.9% surcharge). Access to our pre-loved items and 'freebie' basket is in-store only.
- Entry to shopfront is via PCPS Staff Carpark or Takari Ave lower entry (near hall)
- Online purchases via Munch Monitor are credit card only.
- Discontinued items can be found & purchased via the 'SALE & CLEARANCE' section in Munch Monitor.
- **LOST PROPERTY & LABELLING:** The blue cupboards near the Canteen contain lost items. They are separated and stored by type of item. Please ensure that you have your child's first AND last name on their labels.
 - All items are cleared from Lost Property at the end of each term.

EMAIL: uniformshop@pointclarepandc.com



Point Clare Public School

KINDY 2025 FAMILIES: UNIFORM SHOP SPECIAL EXTENDED OPENING TIMES

8:30AM TO 10:30AM

ON THE FOLLOWING

THURSDAYS:

24TH OCTOBER

31ST OCTOBER

7TH NOVEMBER

14TH NOVEMBER

21ST NOVEMBER



IN-STORE PURCHASES CAN BE MADE WITH CASH OR CARD (1.9% SURCHARGE).

ACCESS TO OUR PRE-LOVED ITEMS AND 'FREEBIE' BASKET IS IN-STORE ONLY.

ENTRY TO SHOPFRONT IS VIA PCPS STAFF CARPARK OR TAKARI LOWER ENTRY
(NEAR HALL)